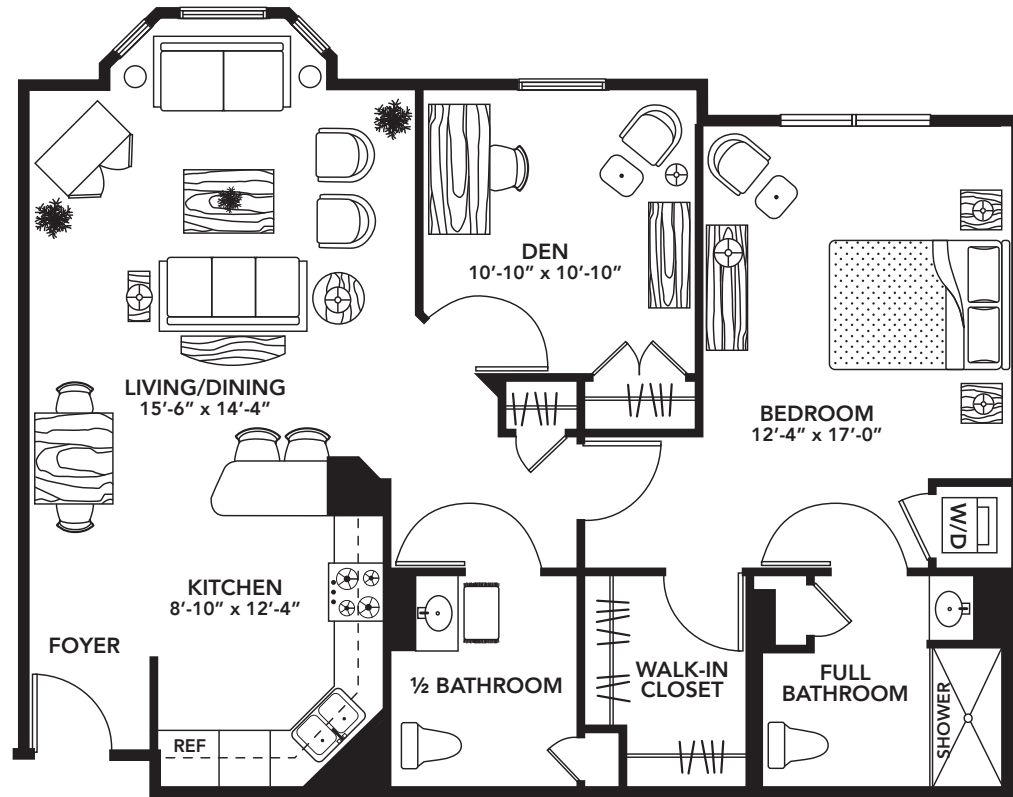


**THE CEDAR**

1 Bedroom + Den, ¾ & ½ Bath

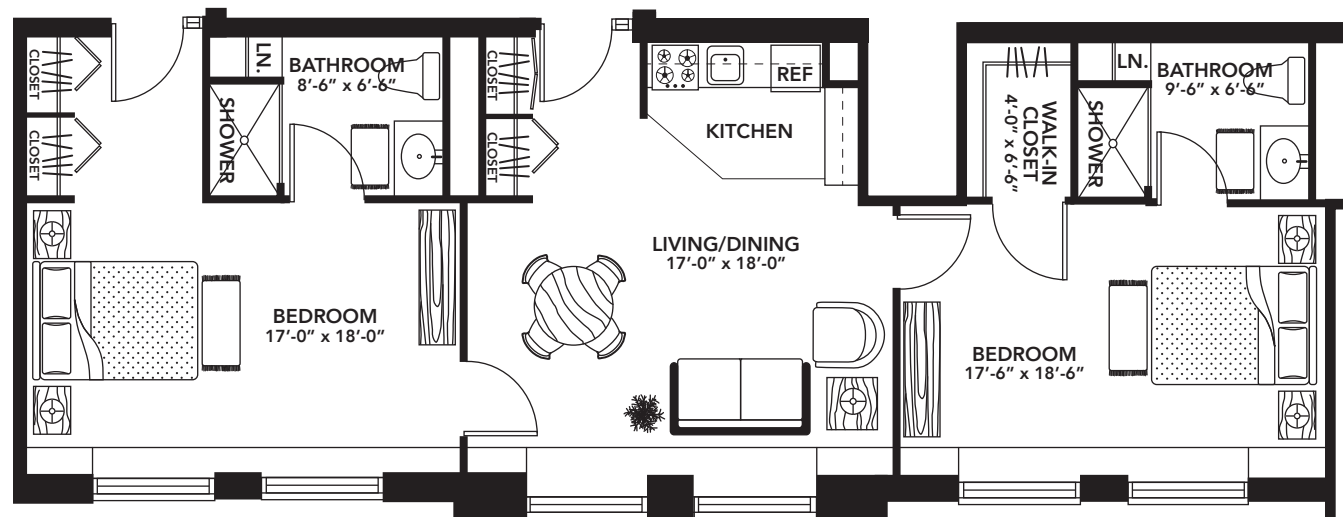


**1,029 - 1,050 SQ. FT. / WEST HALL**

- 2nd & 3rd Floors with Bay Windows
- 1 Meal Per Day
- Full Kitchen & Washer/Dryer

**THE MOUNT CURVE - "MILLION DOLLAR VIEW"**

2 Bedrooms, Two ¾ Baths



**1,085 SQ. FT. / LAKESIDE**

- 1 Meal Per Day
- Full Kitchen

— ASSISTED LIVING —

# *Floor Plans*



**Jones-Harrison** EST. 1888  
— RESIDENCE —

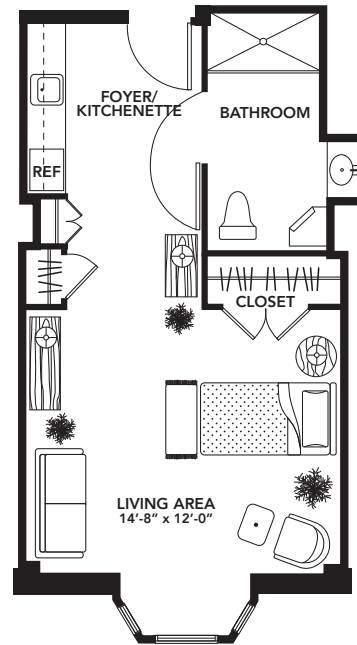
*Honoring the full circle of life.*

3700 Cedar Lake Avenue, Minneapolis, MN 55416

P 612.920.2030 • E [info@jonesharrison.org](mailto:info@jonesharrison.org)

[www.Jones-Harrison.org](http://www.Jones-Harrison.org)

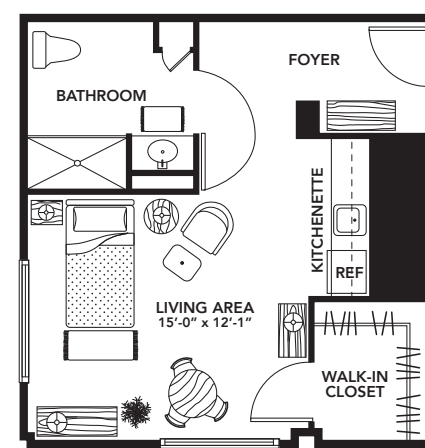
**THE HIAWATHA**  
Studio, ¾ Bath



**365 - 379 SQ. FT. / WEST HALL**

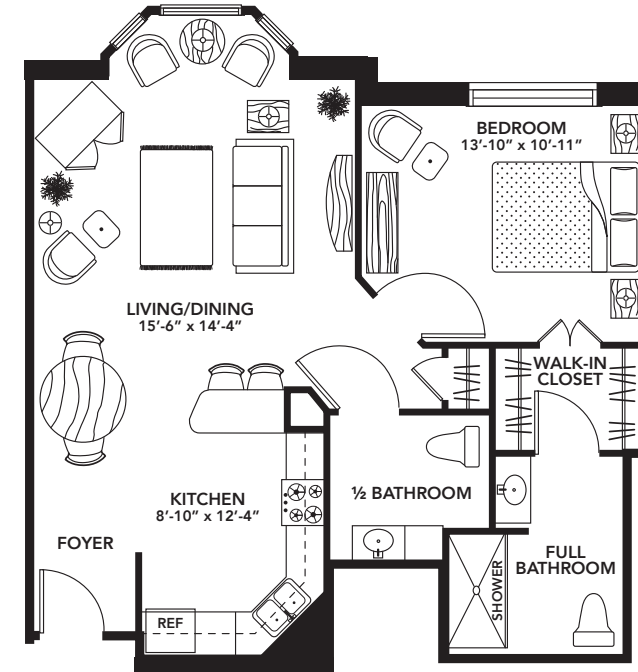
- 2 Meals Per Day
- Kitchenette

**THE HARRIET**  
Studio, ¾ Bath



**416 SQ. FT. / WEST HALL**

- 2 Meals Per Day
- Kitchenette



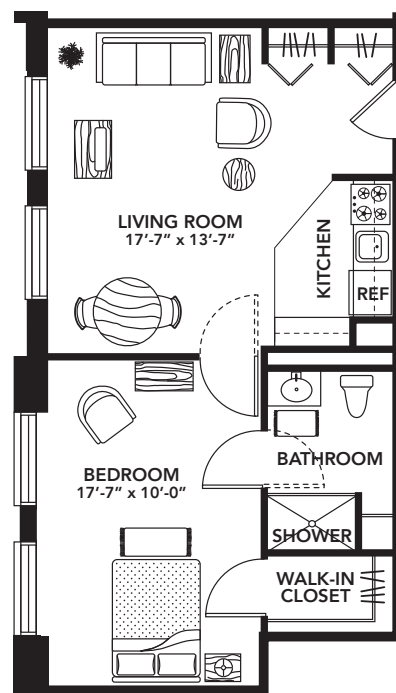
**THE ISLES**

1 Bedroom, ¾ & ½ Bath

**785 SQ. FT. / WEST HALL**

- 2nd & 3rd Floors with Bay Windows
- 1 Meal Per Day
- Full Kitchen

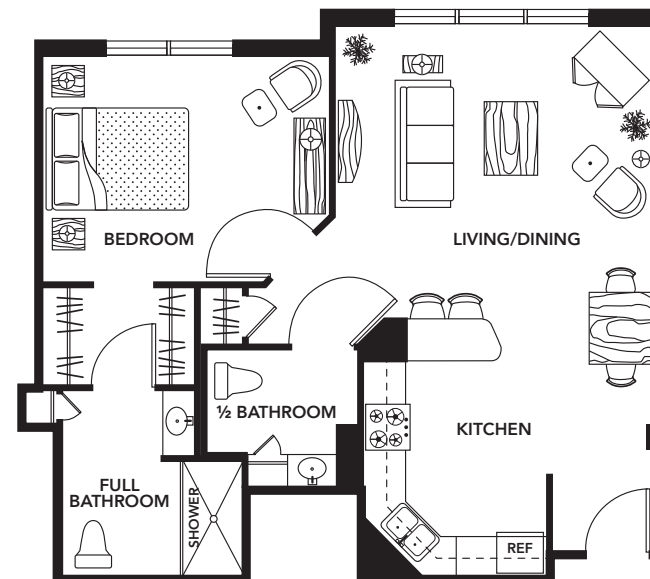
**THE MINNEHAHA**  
1 Bedroom, ¾ Bath



**630 - 650 SQ. FT. / LAKESIDE**

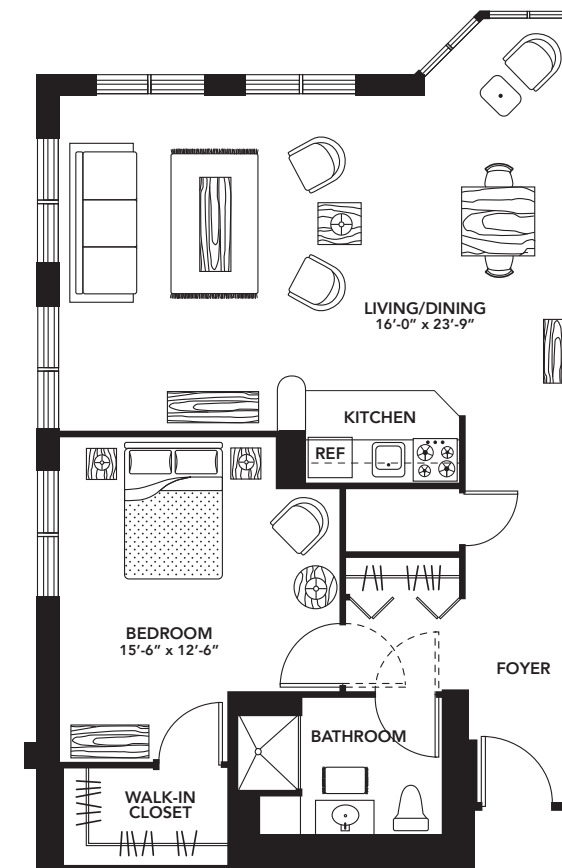
- 1 Meal Per Day
- Full Kitchen

**THE CALHOUN**  
1 Bedroom, ¾ & ½ Bath



**764 SQ. FT. / WEST HALL**

- 1 Meal Per Day
- Full Kitchen



**THE BRYN MAWR - "SKYLINE VIEW"**

1 Bedroom, ¾ Bath

**825 SQ. FT. / LAKESIDE**

- 1 Meal Per Day
- Full Kitchen